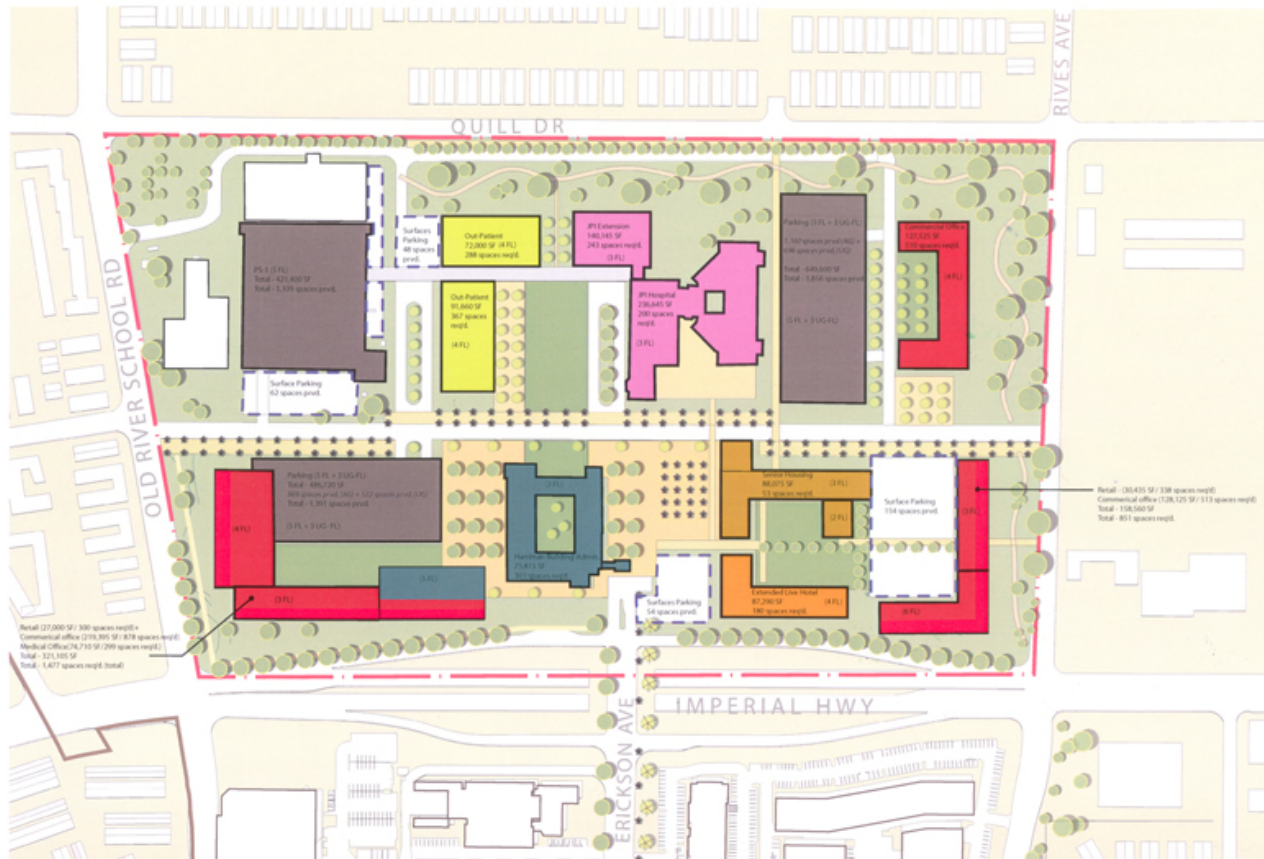


RANCHO LOS AMIGOS HOSPITAL REDEVELOPMENT MASTER PLAN

Downey, CA



RBB Architects has been involved with the Rancho Los Amigos master plan, programming, site development, building development and entitlements on a continuous basis since 1989. Because of this experience, Gensler Architects invited RBB to collaborate with all medical aspects of the campus redevelopment.

RBB completed the existing Jacqueline Perry Institute (JPI) in 2000. The SB 1953 compliant acute care facility has an existing capacity of 150 beds. The proposed redevelopment includes the consolidation of inpatient services into the JPI Building, through the renovation of the building, and a 2 story addition.

A second phase will consolidate outpatient services, administration, clinical services, research, and other support spaces into the historic Harriman Building, the Support Services Annex (SSA) Building, and a dedicated new outpatient building of approximately 70,000 SF.

SCOPE

- Inpatient Tower Renovation
- Two Story Addition
- New Outpatient Building
- Consolidation of Outpatient and Support Services